



CELINE | WING CHAIR

*PRODUCT SHOWN MAY NOT DEPICT STANDARD OFFERING

BODY DETAILS:
UPHOLSTERED ONLY

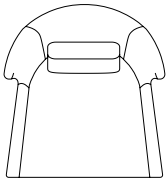
SEAT DETAILS:
LOOSE SEAT CONFIGURATION
BOXED STYLE SEAT CUSHION
SPRING DOWN CONSTRUCTION

BACK DETAILS:
TIGHT BACK CONFIGURATION
FOAM AND FIBER CONSTRUCTION

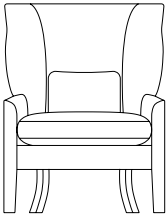
LEG DETAILS:
EXPOSED WOOD LEGS
AVAILABLE IN ASH | OAK | WALNUT
SPECIFY LEG FINISH

KIDNEY PILLOW DETAILS:
17" W x 2" D x 11" H BOXED
FEATHER DOWN CONSTRUCTION

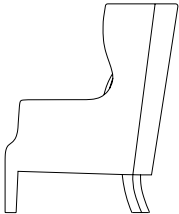
SPECIAL DETAILS:
AVAILABLE WITH UPHOLSTERED LEG



TOP VIEW



34.5" W x 37" D x 44" H



SIDE VIEW

**SOME MODELS MAY REQUIRE PIECE OUTS
DEPENDING ON PATTERN REPEAT/NAP OF FABRIC.
PLEASE CONFIRM PIECE OUT DETAILS WITH YOUR
CUSTOMER SERVICE REPRESENTATIVE.

STANDARD DOUBLE NEEDLE STITCH DETAIL ON
BODY, SEAT CUSHION, BACK AND TOSS PILLOWS
UNLESS OTHERWISE SPECIFIED.

DIMENSIONS MAY VARY WITHIN THE RANGE DEFINED IN
OUR TOLERANCE GUIDELINES.

CELINE WING CHAIR SPECIFICATIONS

OVERALL DIMENSIONS

OVERALL WIDTH: 34.5"/85cm
OVERALL HEIGHT: 44"/110cm
OVERALL DEPTH: 37"/91cm
INTERIOR DEPTH: 27"/69cm
SEAT DEPTH: 20"/62cm
SEAT HEIGHT: 22"/53cm
ARM HEIGHT: 24"/60cm
ARM WIDTH: 4.5"/11cm
WIDTH BETWEEN ARMS: 24.5"/62cm

KIDNEY PILLOW

PILLOW SIZE	STANDARD	METRIC
2" BOXED PILLOW	17" W x 11" H	43cm W x 28cm H

VERSION	PILLOW COUNT
WING CHAIR	1 KIDNEY

YARDAGE ESTIMATE:

VERSION	FABRIC	LEATHER
UPHOLSTERED LEG	10 YDS	180 SQFT
EXPOSED LEG	8 YDS	150 SQFT

*ESTIMATES BASED ON PLAIN FABRIC WITH NO
NAP AND SOLID COLOR LEATHER HIDES

VERSION (CODE)	STANDARD	METRIC
WING CHAIR (CEL 1020)	34.5" W x 37" D x 44" H	85cm W x 91cm D x 110cm H